



Cement | Ready Mix Concrete



About SolidMix

SolidMix is a Raipur-based ready-mix concrete (RMC) provider delivering premium, high-performance concrete for projects of every scale. With a state-of-the-art batching plant and a focus on strength, durability and precision, we combine technology with deep hands-on expertise to provide sustainable, cost-effective concrete solutions—on time, every time. Led by Vinit Kumar Tiwari and Pratham Bafna, the team brings long-standing industry experience and an innovation-first mindset to every pour.

OUR MISSION

To be the leading ready-mix concrete manufacturer in Chhattisgarh by 2027 and the preferred brand among our customers through exceptional quality, innovative solutions, and uncompromising commitment to customer satisfaction.

OUR VISION

To be the most trusted and sustainable provider of ready-mix concrete solutions, shaping resilient infrastructure and contributing to the growth of our community."

OUR CORE VALUES



INTEGRITY

Maintaining honesty, transparency, and ethical conduct in all actions and decisions.



RESPECT

Treating every individual with dignity, fairness, and consideration.



EXCELLENCE

Smart batching tech and state-of-the-art systems power precision, reliability and custom mix designs.



CUSTOMER-FOCUS

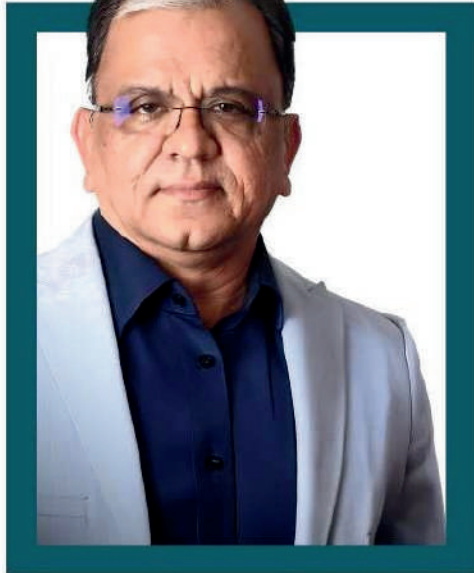
Prioritizing customer needs, delivering value, and building lasting relationships.



TEAMWORK

PROMOTING COLLABORATION, OPEN COMMUNICATION, AND MUTUAL SUPPORT.

VISIONARIES' SPEAKING



VINIT KUMAR TIWARI
DIRECTOR

With over 32 years of experience in the building materials industry, Vinit Kumar Tiwari is a seasoned expert with deep corporate insights. He has spearheaded several greenfield projects and is renowned for strategic investments and structured business growth. He has held leadership roles in major cement companies in the country, including UltraTech, Nuvoco, and STAR Cement. He is the founder of Yashavi Bhava Infra Pvt. Ltd., the parent company of Solidmix RMC. Additionally, he is involved in the hospitality industry, leading a five-star resort and a three-star hotel. Vinit Kumar Tiwari is noted for establishing high industry benchmarks in quality, efficiency, and innovation, making him a key visionary in the ready-mix concrete sector.



Operational Mastery



Corporate Excellence



Infrastructure Expert



Strategic Foresight

VISION DEFINED

PRATHAM BAFNA
DIRECTOR

A dynamic business leader with an ambitious vision, Pratham Bafna is redefining the future of Solid Mix with his bold, forward-thinking approach. With 10 years of excellence, he has carved a niche as a top cement dealer, starting his entrepreneurial journey at an early age. His sharp business acumen, youthful energy, and innovative mindset bring a fresh perspective, driving Solid Mix to new heights in the concrete industry. With an aggressive growth strategy, Pratham pushes boundaries, challenges the status quo, and implements dynamic marketing tactics. His deep market understanding has positioned Solid Mix as a formidable industry force. By blending fearless ambition with strategic vision, he ensures the brand stays ahead, consistently delivering quality, innovation, and industry-leading solutions.



10 years of excellence



Strategic Disruptor



Bold Innovator



Young Visionary





**DRIVEN
TO LEAD**

On a relentless journey
to becoming the
No.1 RMC player.



**VERSATILE
CONCRETE
SOLUTIONS**

Offering a diverse
range of mixes
for every project need.



**SMART
OPERATIONS**

ERP-based workflow
ensuring efficiency, accuracy,
and seamless project
management.



**FLEET
POWERED
BY US**

A dedicated in-house
fleet for reliable and
timely deliveries.



**PREMIUM
CONCRETE
QUALITY**

Ensuring superior
strength and durability
in every pour.



**ECO-FRIENDLY
PRACTICES**

Committed to sustainable
and green construction
solutions.



**EXPERT
ENGINEERING
SUPPORT**

Backed by specialists
for seamless
execution of projects.



**STATE-OF-THE-ART
TECHNOLOGY**

Utilizing cutting-edge
systems for precision
and reliability.



**CUSTOM
CONCRETE
SOLUTIONS**

Tailored mixes to
meet unique project
requirements.



**COMMITMENT
TO SAFETY**

Adhering to the
highest safety standards
on-site.



**RAPID & RELIABLE
SERVICE**

Delivering on time,
every time with
efficiency.



**END-TO-END
CUSTOMER SUPPORT**

Dedicated assistance
before, during & after

SOLID EXPERTS

ON-SITE QUALITY ASSURANCE
EVERYTIME





ENGINEER APPROVED

Built to meet the highest industry standards.



SMART SOURCING

Premium materials for unmatched strength and durability.



ALWAYS ON CALL

Round-the-clock expert assistance for your needs.



VERSATILE CONCRETE SOLUTIONS

1. STANDARD CONCRETE
2. STEEL FIBER CONCRETE
3. PP FIBER CONCRETE
4. LIGHTWEIGHT CONCRETE
5. SELF-COMPACTING CONCRETE
6. HIGH STRENGTH CONCRETE
7. WATERPROOF CONCRETE
8. HEAT-RESISTANT CONCRETE
9. STAMP CONCRETE
10. BAG CONCRETE
11. PERMICRETE CONCRETE



Transform Your Spaces with Stamped Concrete

STAMPED CONCRETE & OVERLAY FLOORING

Give your spaces a premium, natural look with Stamped Concrete.

Available in multiple textures and colors, it combines strength, durability, and style—perfect for driveways, patios, and landscapes.



✓ Easy Maintenance ✓ Slip & Weather Resistant ✓ No Weed Growth or Cracks

Explore more at www.solidmix.com

POPULAR DESIGNS & PATTERNS



TUSCANY STONE



ASHLAR SLATE



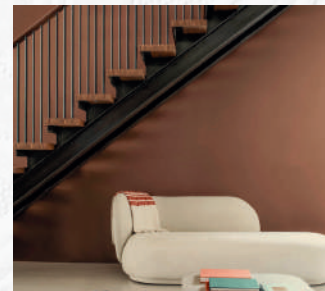
BELGIAN BLOCK



COBBLESTONE



WOOD PLANK



SADDLE BROWN

APPLICATIONS



PATIO



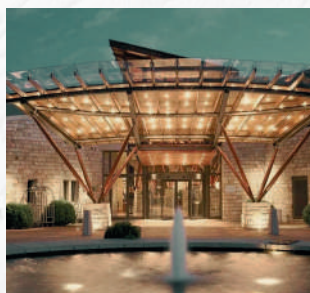
DRIVEWAY



POOL DECK



SIDEWALKS & PATHWAYS



HOTEL ENTRANCE



COMMERCIAL SPACES

CONTACT US



P.H.No. -77, Kh.No. - 365/5
Village - Serikhedi, Teh. & Dist. - Raipur (C.G.)



+91 98931 11201



info@solidmixrmc.com
support@solidmixrmc.com

